



A beautiful Luxury dream home
to Change Your Lifestyle ...



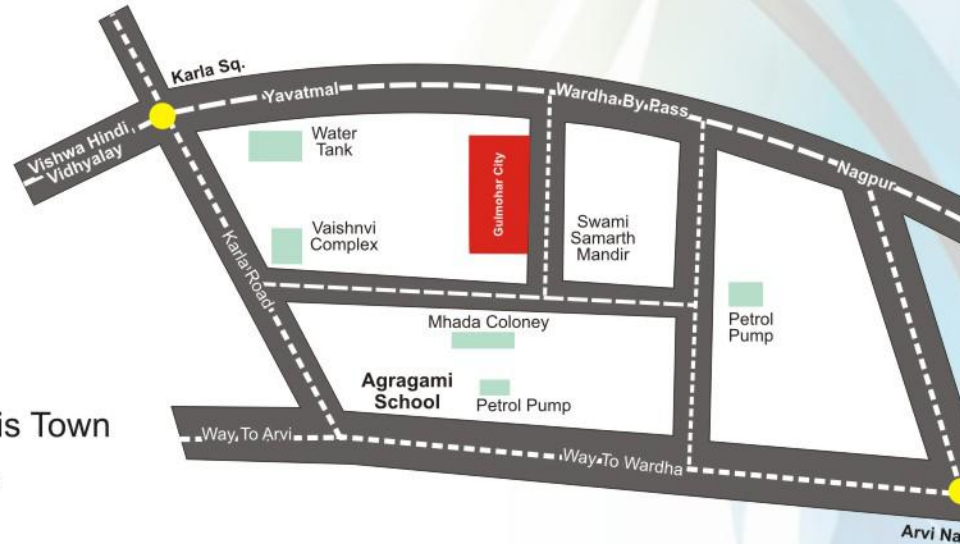
Gulmohar
City

AMENITIES OFFERED:

Gulmohar City will be the first project in Wardha to offer such amenities!

1. World class construction quality with top grade material.
2. Private Playground
3. Children park within the premises.
4. Jogging track.
5. 24/7 Water Supply.
6. Club House-Only for Gulmohar City Residents.
7. Security Services.
8. Accessible from four sides from the city.
9. Tree plantations

Gulmohar City will be a benchmark life space project for this Town with fresh environment and a calm place for our residents.



LOCATION PLAN

: Contact person :

Mohammed Sadaf Finance & Operations

+ 91 9823037892

Mohammed Seemab Marketing

+ 91 9890679237

Mohammed Shabbir Director

+ 91 9823079237

Project :



**SABA DEVELOPERS
& BUILDERS PVT. LTD.**

Contact for Booking & site visit.

: Site Office:

Saba Developers & Builders Pvt Ltd

43-44, Gulmohar City, Mouza: Alodi, Behind Vaishnavi Complex, Karla

Landmark: Nr Sai Samarth Temple, Tahsil & Distt. Wardha.

: Wardha Booking center :

AGN Real Estate, Opposite Central Bank Of India,
Socialist Chowk, main market, Station road, Wardha

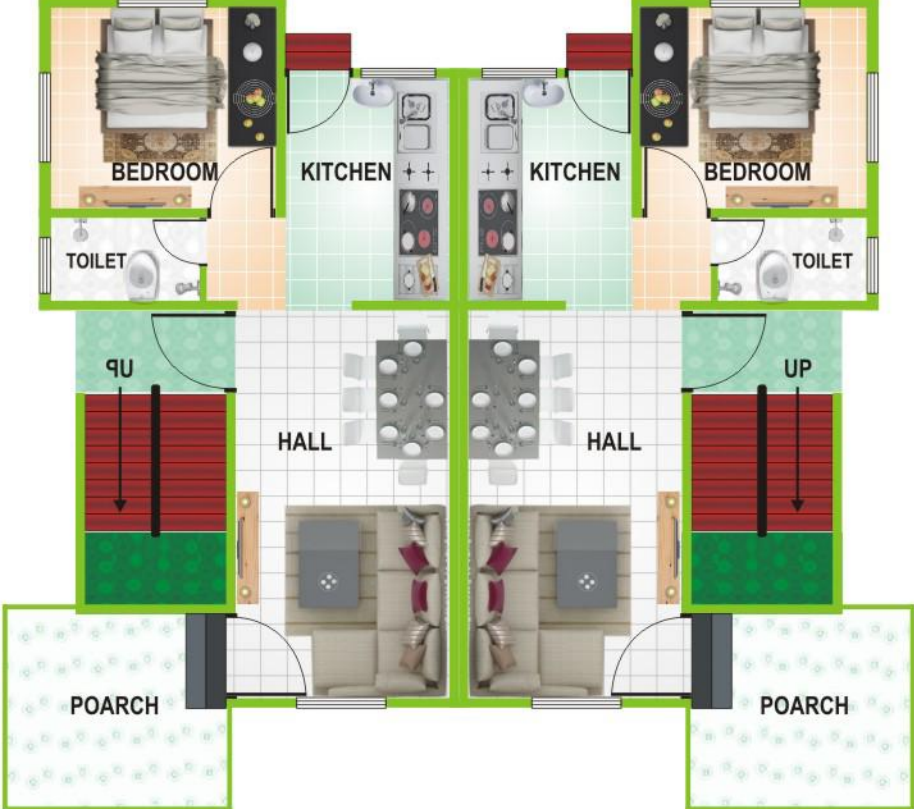
: Office address :

Saba Developers & Builders Pvt Ltd

Gulmohar Galaxy Duplex 2 BHK

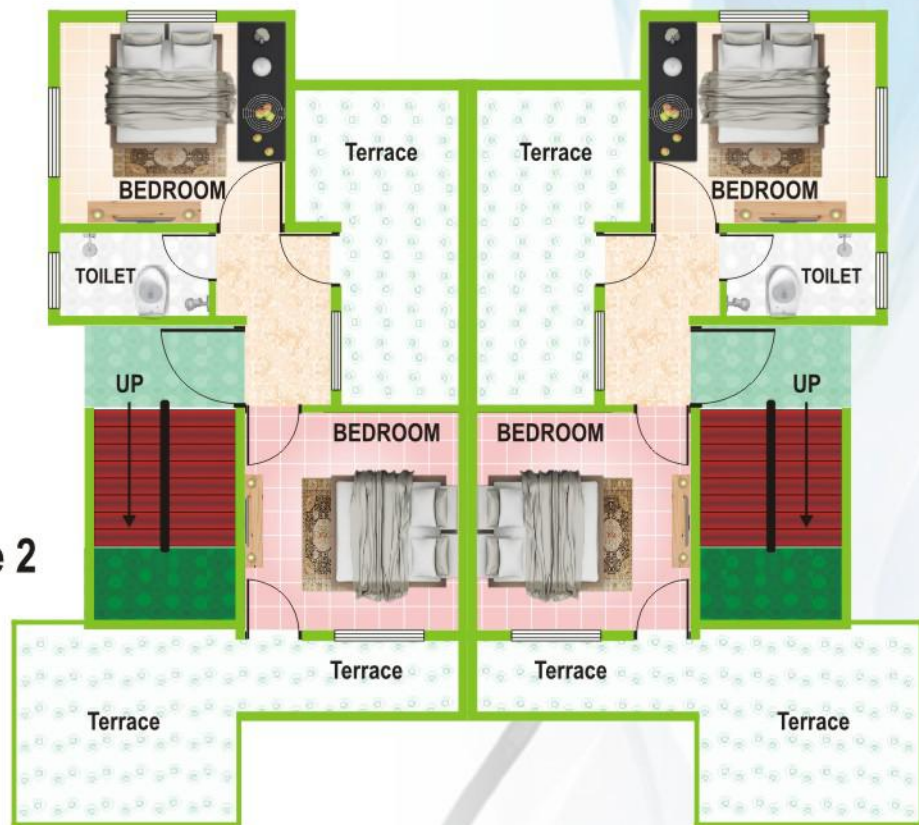


Gulmohar Super Royal Duplex 3 BHK



GROUND FLOOR PLAN

S/B Area Avg. Size 1400 Sq.Ft. Total 6 Units in Phase 2



FIRST FLOOR PLAN

Gulmohar Super Royal Duplex 3 BHK



S/R Area Avg. Size 1400 Sq Ft. Total 6 Units in Phase 2



Saba Developers & Builders Pvt Ltd (SDB):

Possesses a rich and diversified presence across the growing sectors in the infrastructure arena. New windows of opportunity are opening up and SDB is prepared for an eventful year marked with important milestones. At SDB we are leveraging on our past to address projects for the present with the objective to build India of tomorrow.

SDB has the depth, expertise, experience, and capabilities of a large company, yet the flexibility of a medium-sized organization to take on the most challenging projects.

Key persons:

The company is headed by a combination of experienced and young leadership. Mr. Mohammed Shabbir, a highly experienced and well-respected name in the industry, shares his expertise in real estate and a network of potential manpower. Mr. Mohammed Sadaf, a young and dynamic leader, undertakes Finance and Operations of the entire group, and Mohammed Seemab, a young leader, undertakes Marketing processes.

More than a decade, SDB has successfully established relationships with valued customers and channel partners, which have resulted in steady but firm growth of the group.

“GULMOHAR CITY” Saba Developers & Builders Pvt Ltd introduces its new venture **“Gulmohar City”**.

“Gulmohar City” amongst the first township project in Wardha City! This project is the only project in Wardha city which is in the city limits and spread across a land area of 4 acres. The project is divided in three phases and will be a landmark project for Wardha. Gulmohar City is a 7-minute drive from Railway Station and Wardha Bus Stop, with schools, colleges, marketplace, and hospitals at a drive of 10-15 minutes. Our project is also near to “Vishwa Hindi Vidyalaya” the largest international Hindi School in India.

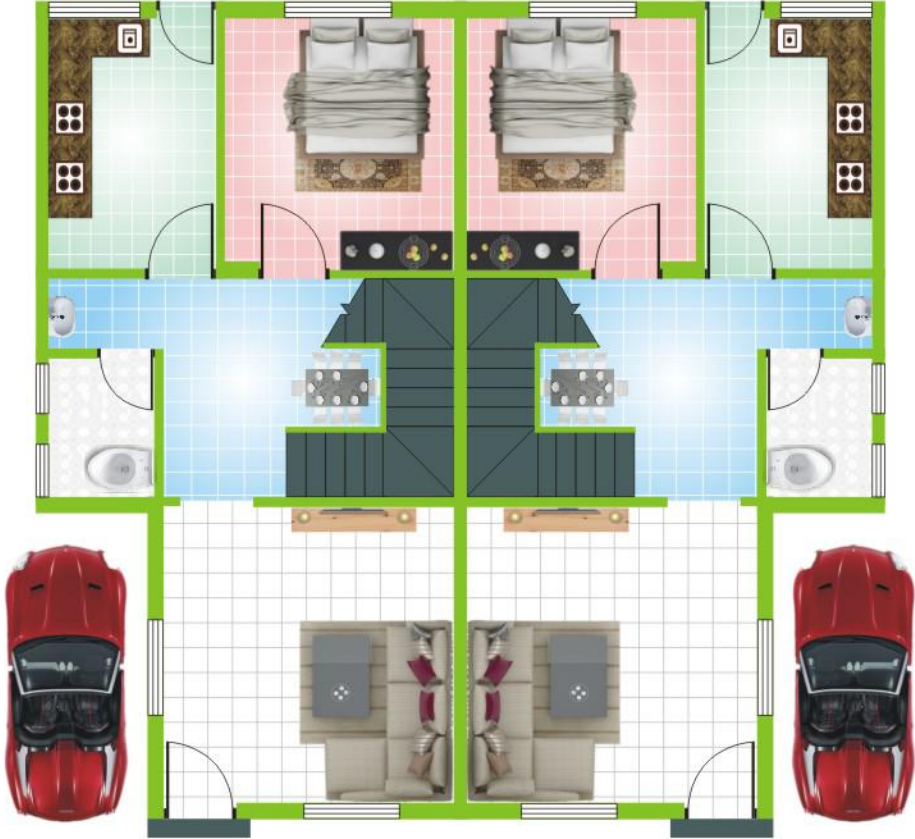
Products Offered:

1. Twin Duplex (2BHK).

Gulmohar Classic Row House 2 BHK



Gulmohar Galaxy Duplex 2 BHK



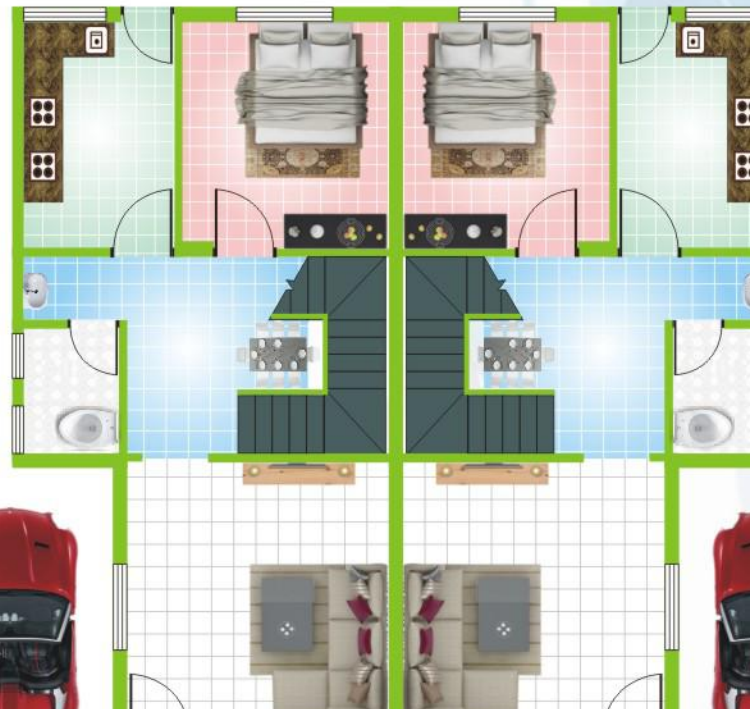
GROUND FLOOR PLAN

S/B Area Avg. Size 1200 Sq.Ft.
Total 8 Units in Phase 1



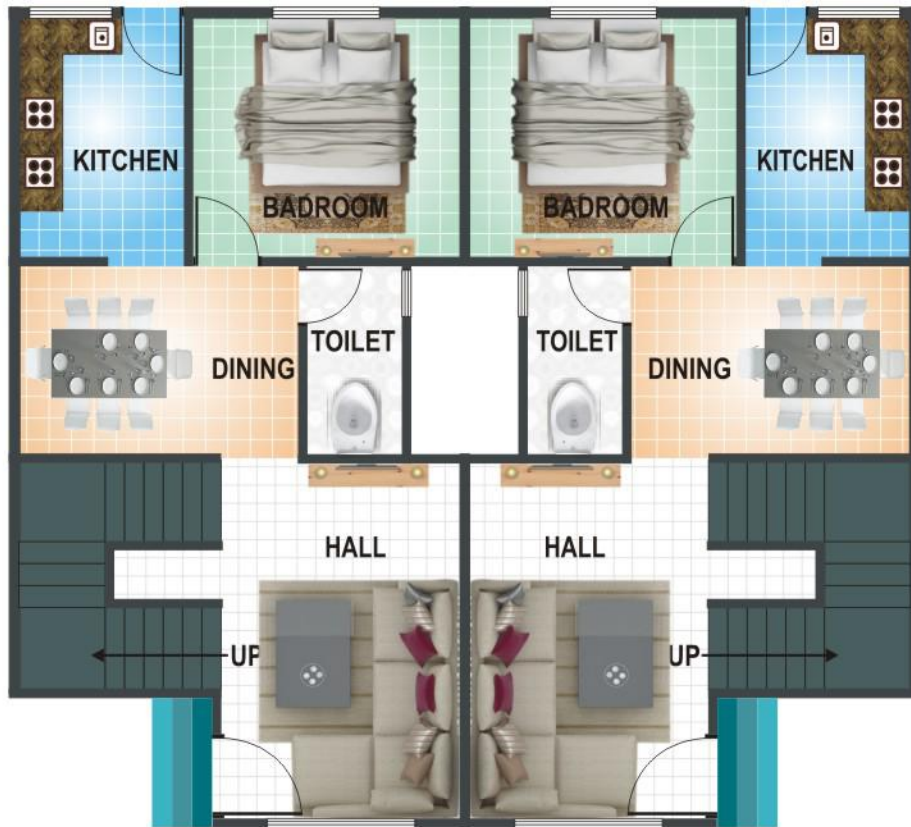
Gulmohar Nano 2 BHK Row House





Gulmohar luxury Duplex 4 BHK

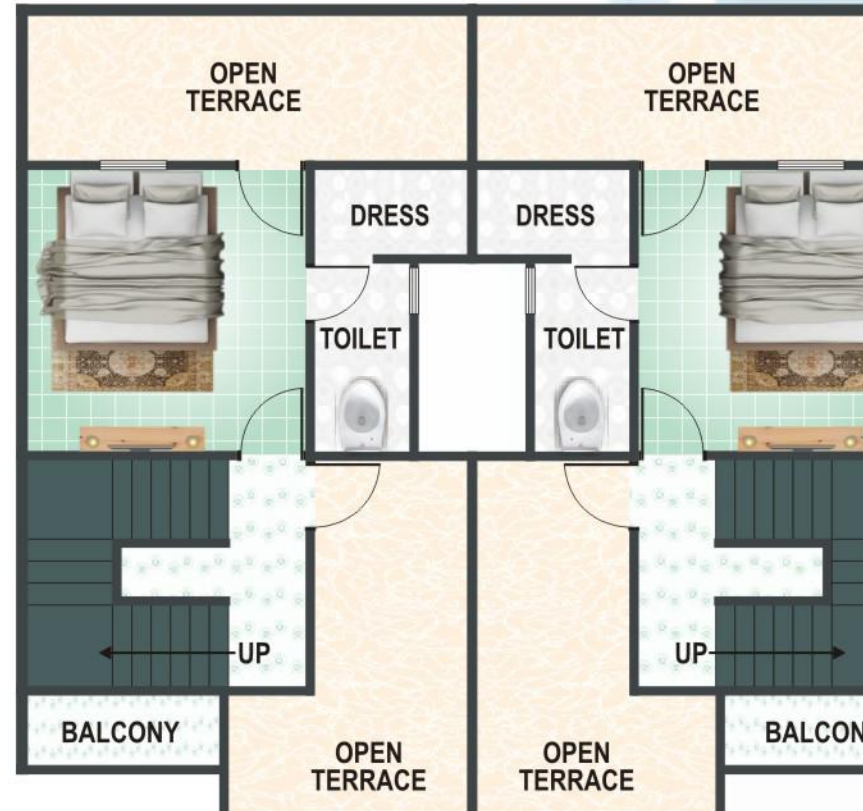




GROUND FLOOR PLAN

**S/B Area Avg. Size 1000 Sq.Ft.
Total 21 Units in Phase 2**

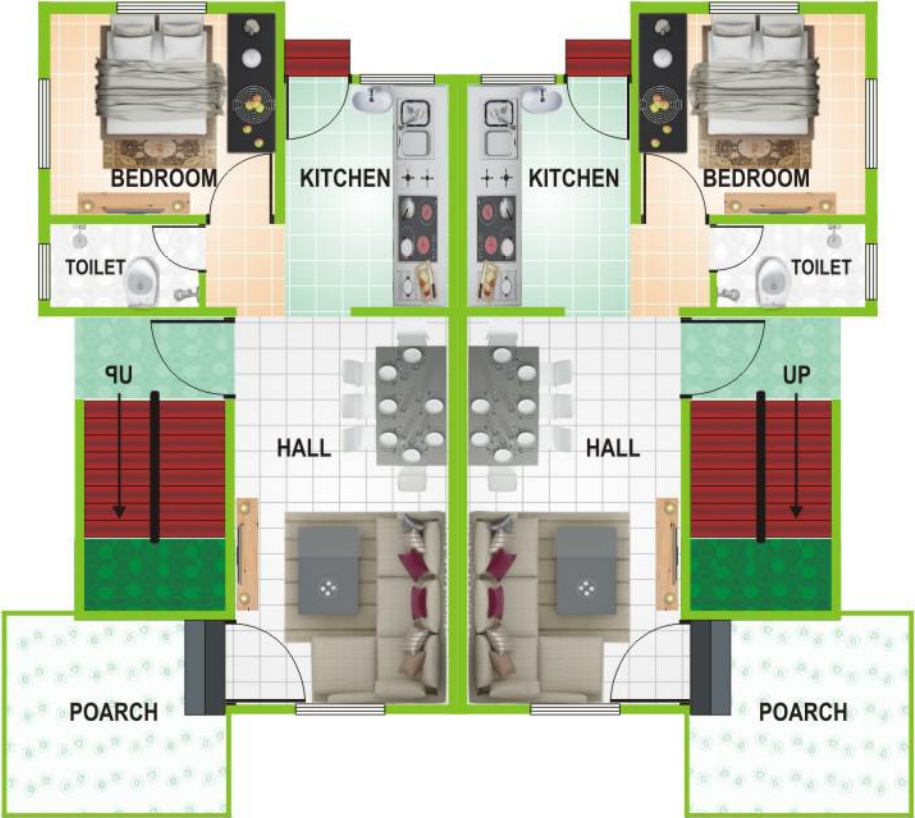
Gulmohar Nano 2 BHK Row House



Gulmohar Royal Duplex 3 BHK

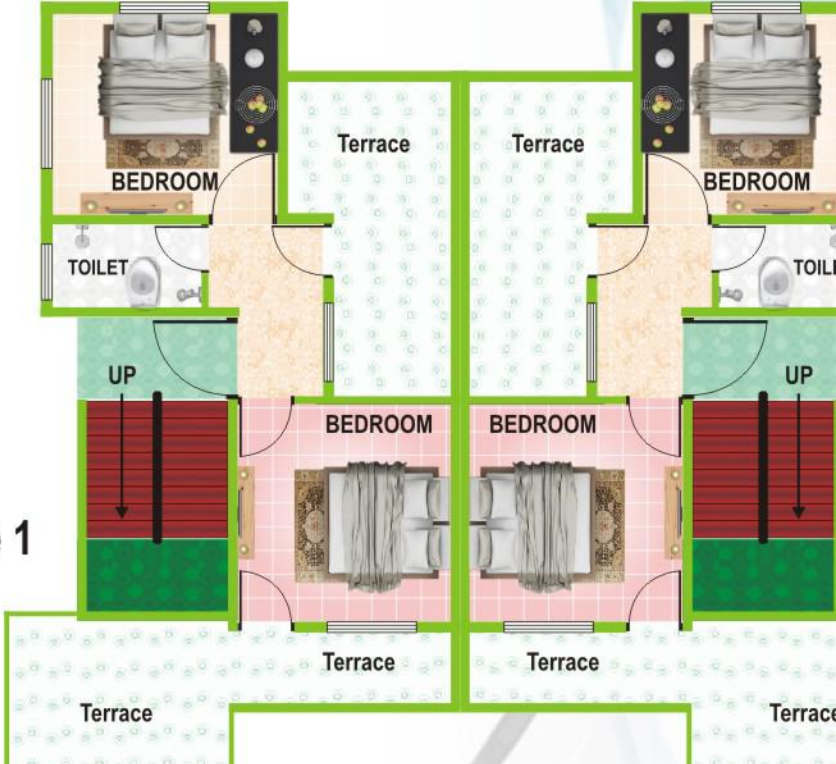


Gulmohar Galaxy Duplex 2 BHK



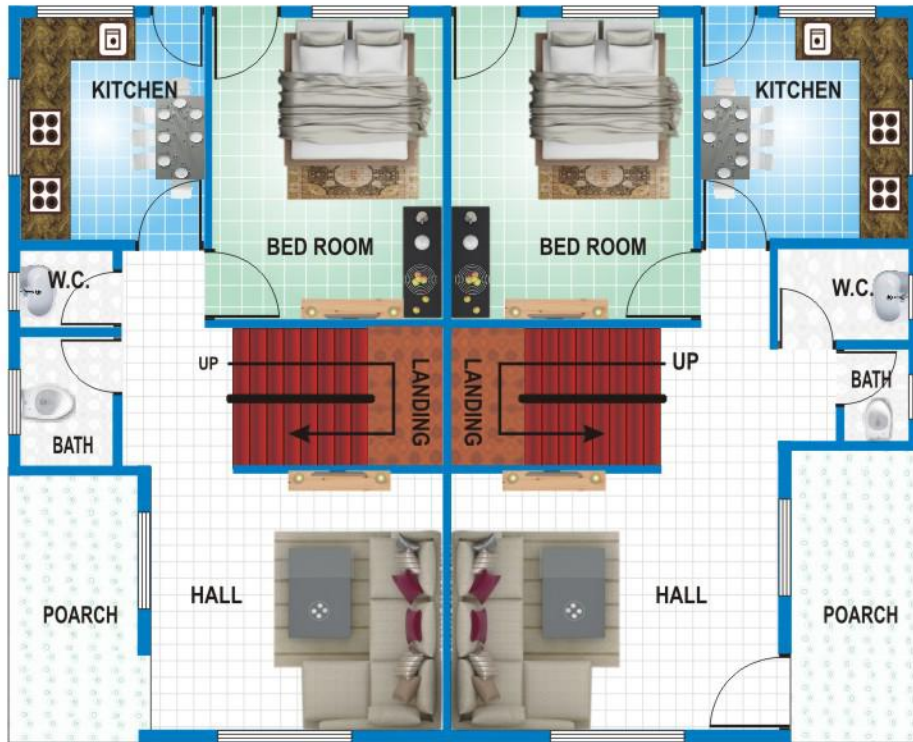
GROUND FLOOR PLAN

S/B Area Avg. Size 1200 Sq.Ft. Total 8 Units in Phase 1



Phase 3-2bhk-1200 Sqft Twin Duplex





DUPLEX - B
 SUPER B/UP AREA
 = 103.24 SQ.MT.
 = 1111.00 SQ.FT.

DUPLEX - B
 SUPER B/UP AREA
 = 111.52 SQ.MT.
 = 1200.00 SQ.FT.

S/B Area Avg. Size 1350 Sq.Ft.
Total 4 Units in Phase 1

Gulmohar Royal Duplex 3 BHK

